

Images in Clinical Hematology

Lymphocytes with auer rod-like inclusions in chronic lymphocytic leukemia



Verónica Roldán Galiacho ^{*}, Ana Lobo Olmedo ,
Laura Aranguren del Castillo , Javier Arzuaga-Mendez ,
Juan Carlos García-Ruiz 

Cruces University Hospital, Barakaldo, Bizkaia, Spain

ARTICLE INFO

Article history:

Received 3 June 2021

Accepted 21 June 2021

Available online 14 September 2021

A 45-year-old man with history of hypothyroidism underwent a control analysis in which lymphocytosis was detected (lymphocyte count: $10,08 \times 10^9/L$). Family background highlighted chronic lymphocytic leukemia in his mother. The patient was asymptomatic, without lymph nodes or visceromegalies in physical examination. Neither anemia nor thrombocytopenia were detected (hemoglobin 163 g/L and platelets $287 \times 10^9/L$).

Peripheral blood smear showed atypical lymphocytes intermediate in size, some of them with clumped chromatin (Figures 1 and 2) but others with evident nucleoli (Figure 3),

and moderate cytoplasm with multiple azurophilic needle-shaped inclusions, also called Auer rod-like (Figures 1-3). By flow cytometry, the 99% of B lymphocytes expressed CD45, CD19, CD20, CD5, CD23, CD200, CD43 and were negative for CD10, CD103, CD22, CD81, CD25, CD305 and kappa and lambda surface chains. Diagnosis of chronic lymphocytic leukemia (CLL) was established.

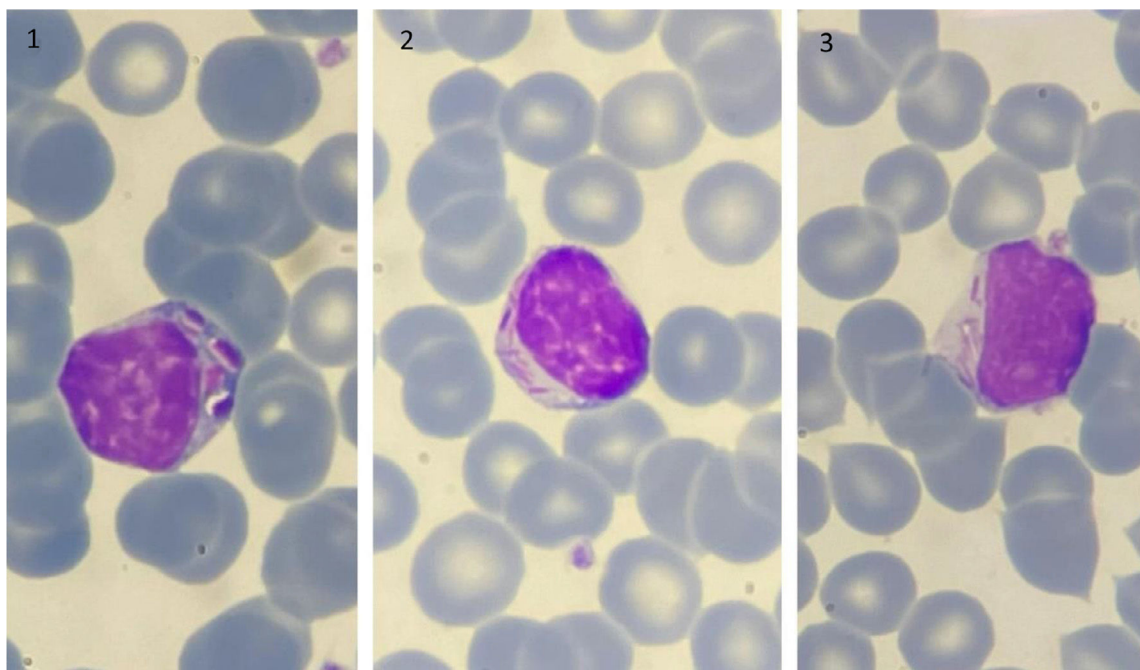
Auer rods are a morphological hallmark of acute myeloid leukemia and are important to classify myelodysplastic syndromes. However, Auer rod-like inclusions are an uncommon

^{*} Corresponding author at: Department of Hematology, Cruces University Hospital, Barakaldo, Bizkaia, 48903, Spain.

E-mail address: veronica.roldangaliacho@osakidetza.eus (V. Roldán Galiacho).

<https://doi.org/10.1016/j.htct.2021.06.018>

2531-1379/© 2021 Published by Elsevier España, S.L.U. on behalf of Associação Brasileira de Hematologia, Hemoterapia e Terapia Celular. This is an open access article under the CC BY-NC-ND license (<http://creativecommons.org/licenses/by-nc-nd/4.0/>).



Figures 1-3 – Lymphocytes with Auer rod-like inclusions (May-Grünwald Giemsa x100 objective).

finding that has been described in different B cell lymphoproliferative disorders like CLL.^{1,2} The composition of these inclusions is uncertain, some authors suggest a lysosomal origin,² but others hypothesize they are abnormal immunoglobulins which precipitate in the cytoplasm.^{1, 3} This case emphasizes the importance of an integrated diagnosis in hematological malignancies.

Conflicts of interest

The authors declare no conflicts of interest.

REFERENCES

1. Hristov AC, Saladino A, Nava VE, Gocke CD. Auer rod-like inclusions in a low-grade B-cell leukemia. *Ann Diagn Pathol*. 2010 Aug;14(4):292–5.
2. Gao Z, Cui F, Liu M, Guo Y, Hu Y, Shi M. Auer rod-like inclusions in the cytoplasm of B-cell lymphoma cells with bone marrow infiltration. *Exp Hematol*. 2019 Sep;77:6–11.
3. Peters O, Thielemans C, Steenssens L, De Waele M, Hijmans W, Van Camp B. Intracellular inclusion bodies in 14 patients with B cell lymphoproliferative disorders. *J Clin Pathol*. 1984;37(1):45–50.