



Images in Clinical Hematology

A rare case of circulating anaplastic lymphoma kinase-negative anaplastic large cell lymphoma

Radu Chiriac *, Lucile Baseggio

Laboratoire d'hématologie biologique, Hospices Civils de Lyon, Pierre-Bénite, France

ARTICLE INFO

Article history:

Received 25 June 2024

Accepted 18 July 2024

Available online 15 February 2025

A 71-year-old female presented with B symptoms, splenomegaly, and bowel obstruction. Her blood count showed leukocytosis ($79 \times 10^9/L$), anemia (100 g/L), and thrombocytopenia ($70 \times 10^9/L$).

A blood smear revealed large lymphomatous cells with distinctive nuclei and cytoplasmic granules. Flow cytometry identified large CD4⁺ T-cells with abnormal CD3 and CD7 loss, a cytotoxic profile, and dimCD30 expression. A lymph node biopsy confirmed anaplastic large cell lymphoma (ALCL), anaplastic lymphoma kinase (ALK)-negative, characterized by strong CD30 expression.

Peripheral blood involvement in ALK-negative ALCL is rare, highlighting diagnostic challenges and the need for accurate identification to ensure proper treatment (Figure 1).^{1,2}

Author contributions

Lucile Baseggio and Radu Chiriac wrote the manuscript and conducted the cytological and flow cytometric studies. Both authors contributed to the final manuscript.

* Corresponding author. Laboratoire d'hématologie biologique, Hospices Civils de Lyon, 69495 Pierre-Bénite, France.

E-mail address: radu.chiriac@chu-lyon.fr (R. Chiriac).

<https://doi.org/10.1016/j.htct.2025.103743>

2531-1379/© 2025 Associação Brasileira de Hematologia, Hemoterapia e Terapia Celular. Published by Elsevier España, S.L.U. This is an open access article under the CC BY license (<http://creativecommons.org/licenses/by/4.0/>).

Data availability

Data sharing is not applicable to this article as no new data were created or analyzed in this study.

Ethics approval statement

This manuscript respects the ethic policy of CHU Lyon for the treatment of human research participants.

Patient consent statement

No patient-identifying data were used. The authors did not obtain written informed consent from the patient but the patient did not object to his data being used for research purposes (as required by ethic policy of CHU Lyon).

Permission to reproduce material from other sources

The authors declare no use of third-party material in this study for which formal permission is required.

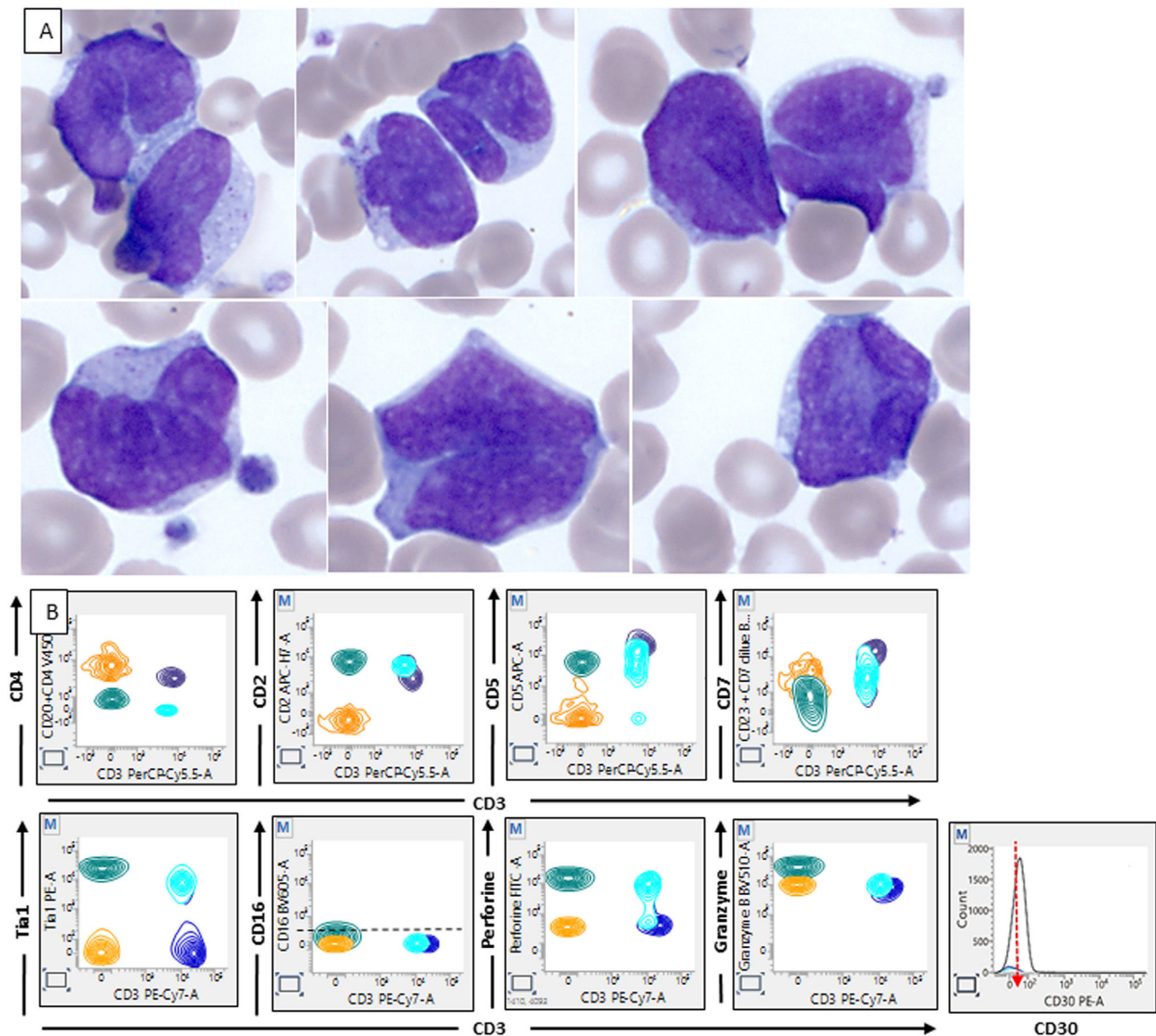


Figure 1 – Panel A: May-Grunwald Giemsa (x100 magnification): blood smear reveals large lymphomatous cells with highly contoured, occasionally notched, and sometimes "flower-like" nuclei; **Panel B:** green plot: flow cytometric profile, CD4⁺ T-cells with abnormal loss of CD3, CD7 expression, and a cytotoxic profile.

Clinical trial registration

Not applicable.

Conflicts of interest

The authors have no conflict of interest.

Funding statement

None.

REFERENCES

1. Xie W, Medeiros LJ, Fan G, Li S, Xu J. Systemic ALK-negative anaplastic large cell lymphoma: insights into morphologic, immunophenotypic, genetic and molecular characteristics. *Hum Pathol.* 2024;105671.
2. Shustov A, Cabrera ME, Civallero M, Bellei M, Ko YH, Manni M, et al. ALK-negative anaplastic large cell lymphoma: features and outcomes of 235 patients from the International T-Cell Project. *Blood Adv.* 2021;5(3):640–8.